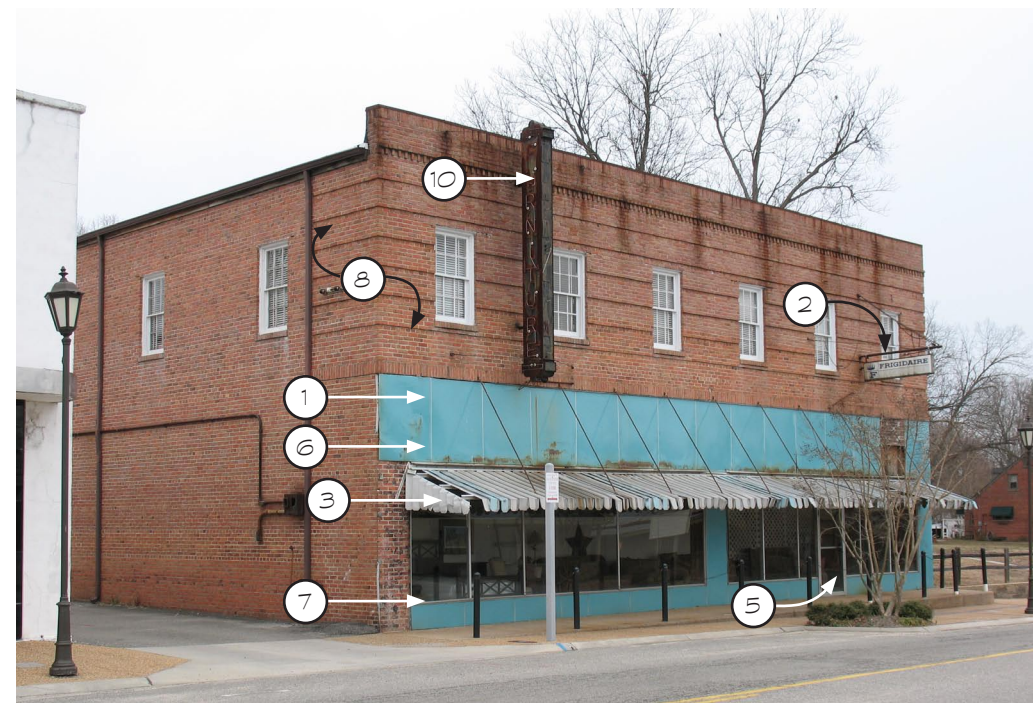




1 HISTORIC IMAGE  
NOT TO SCALE



2 EXISTING FACADE  
NOT TO SCALE

KEYNOTES:

- |  |   |
|--|---|
| <ol style="list-style-type: none"> <li>1. Remove metal panels and any associated hardware. Remove mastic from brick behind panels.</li> <li>2. Remove sign and all hardware. Patch brick and mortar as necessary; match existing brick and mortar in color, strength, texture, and tooling.</li> <li>3. Remove metal awning and all hardware; patch brick and mortar as necessary.</li> <li>4. Provide new step at side of entrance.</li> <li>5. Restore storefront door; provide weatherstripping.</li> <li>6. Provide new metal or glass panels at storefront in design shown, P-1 (white) and P-2 (black). Include wood recessed panels in former transom area, finish color P-3.</li> <li>7. Repair or replace storefront trim as necessary to coordinate with new panels, color to match existing.</li> </ol> | <ol style="list-style-type: none"> <li>8. Clean brick on front and side facades using gentlest means possible.</li> <li>9. Provide new awning with black frame and open sides, with loose 8" valance.</li> <li>10. Restore existing sign, return neon to working order.</li> <li>11. Provide new raised letter sign in recessed sign panel as shown.</li> </ol> |
|--|---|

**FINISHES AND PAINT COLORS:**  
 PAINT: Benjamin Moore or approved equal.  
 P-1: AF-15 Steam  
 P-2: Exterior Ready-Mix Black  
 P-3: AF-705 Cinder  
 AWNING FABRIC: Sunbrella or approved equal  
 #5704-0006 Black/White Bar Stripe

**SCHEMATIC DESIGN:** This drawing is conceptual and not working drawings for construction. The notes are intended as guidelines for rehabilitation. Any changes to the conceptual design should be reviewed and approved by the Architect and Gloucester Main Street Association. Some aspects of the design may require further drawings prior to construction. Field Check any dimensions shown on this drawing. It is the responsibility of the owner and contractor to acquire additional technical or professional assistance as needed before or during construction.



3 PROPOSED FACADE  
NOT TO SCALE

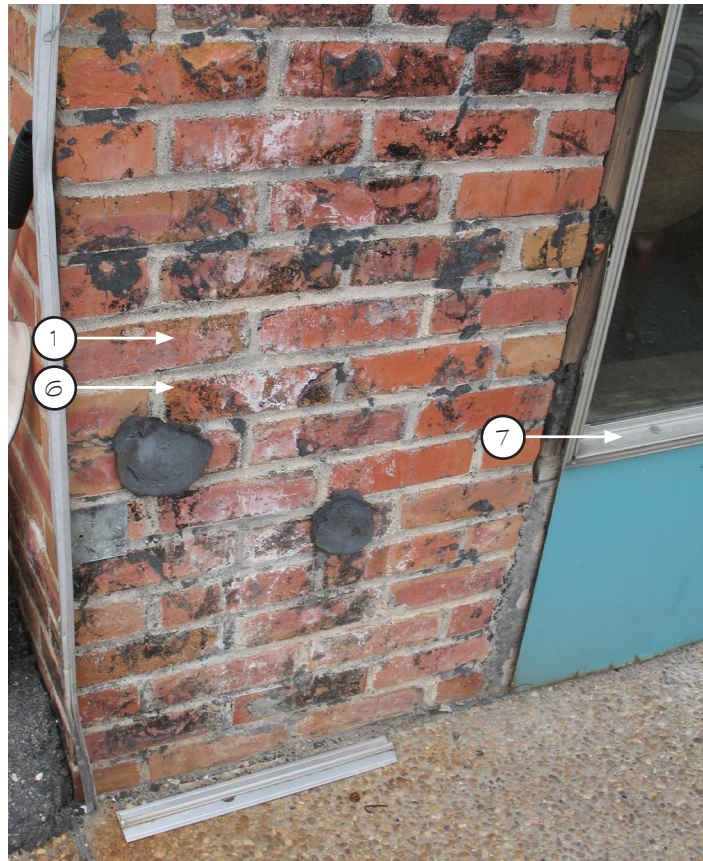


**FRAZIER ASSOCIATES**  
 ARCHITECTURE • COMMUNITY DESIGN • WAYFINDING  
 213 NORTH AUGUSTA STREET, STAUNTON, VA 24401  
 PHONE 540.886.8230 FAX 540.886.8629  
 www.frazierassociates.com

6677 Main Street: Tri-County Furniture  
 Gloucester, Virginia

12/9/10  
 2009-0096

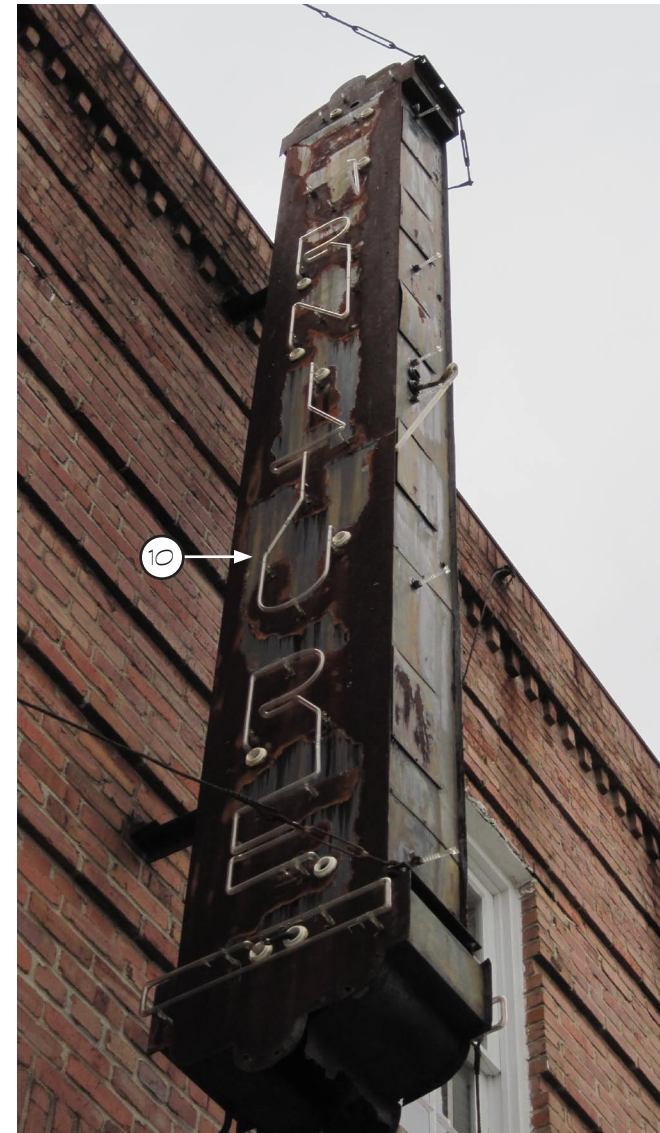
A.1  
 SHEET 1 OF 2



1 EXISTING STOREFRONT  
NOT TO SCALE



3 EXISTING STOREFRONT & SIGN  
NOT TO SCALE



4 EXISTING SIGN  
NOT TO SCALE



2 EXISTING SIDEWALK  
NOT TO SCALE

KEYNOTES:

1. Remove metal panels and any associated hardware. Remove mastic from brick behind panels.
2. Remove sign and all hardware. Patch brick and mortar as necessary; match existing brick and mortar in color, strength, texture, and tooling.
3. Remove metal awning and all hardware; patch brick and mortar as necessary.
4. Provide new step at side of entrance.
5. Restore storefront door; provide weatherstripping.
6. Provide new metal or glass panels at storefront in design shown, P-1 (white) and P-2 (black). Include recessed panels in former transom area, finish color P-3.
7. Repair or replace storefront trim as necessary to coordinate with new panels, color to match existing.
8. Clean brick on front and side facades using gentlest means possible.
9. Provide new awning with black frame and open sides, with loose 8" valance.
10. Restore existing sign, return neon to working order.
11. Provide new raised letter sign in recessed sign panel as shown.

FINISHES AND PAINT COLORS:

PAINT: Benjamin Moore or approved equal.

P-1: AF-15 Steam

P-2: Exterior Ready-Mix Black

P-3: AF-705 Cinder

AWNING FABRIC: Sunbrella or approved equal

#5704-0006 Black/White Bar Stripe



FRAZIER ASSOCIATES

ARCHITECTURE • COMMUNITY DESIGN • WAYFINDING  
213 NORTH AUGUSTA STREET, STAUNTON, VA 24401  
PHONE 540.886.8230 FAX 540.886.8629  
www.frazierassociates.com



6677 Main Street: Tri-County Furniture  
Gloucester, Virginia

12/9/10  
2009-0096

A.2  
SHEET 2 OF 2